



AUCTION

Russ Kiko Associates Inc. Auctioneers • Richard T. Kiko Agency, Inc. Realtor
2722 Fulton Drive. NW, Canton, OH. 44718 • (330) 455-9357



www.kikoauctions.com



TUESDAY - AUGUST 25, 2015 - 10:00 AM
REAL ESTATE SELLS AT 11:00 AM

“Gerald S. Cirone - Pinnacle Roofing”

**13,288 sq ft Industrial Building with Open
Side Yards - Zoned I-1 Light Industry –
Approx. 1 Acre**

**1999 Harley Motorcycle with Sidecar, Trucks -
Remaining Roofing Equipment and Supplies**

Selling for the wife of the late Jerry Cirone. Absolute auction, all sells to the highest bidder on location: **1219 PROSPECT AVE SW, CANTON, OHIO 44706.**

Directions: US 30 west of I-77 to Harrison Ave exit and Navarre Rd SW. East on Navarre Rd and north on Prospect Ave to auction. Watch for **KIKO** signs...



Real Estate: Built in 1913 concrete block, wood and steel 13,288 sq ft building with metal, shingle and asphalt pitched and flat roof. Partial second story loft area, interior office space and restroom. Several roll up doors, 15' interior height, concrete floor, partial radiant and forced air gas heat, city water and sewer. 280'x152' lot, fenced in side yard. Conveniently located near US 30 and I 77. Adaptable to a multitude of uses.

TERMS ON REAL ESTATE: 10% down auction day, balance due at closing. Buyer's premium of 10% to be added to the final bid to establish the purchase price. Any desired inspections must be made prior to bidding. All information contained herein was derived from sources believed to be correct. Information is believed to be accurate but not guaranteed.

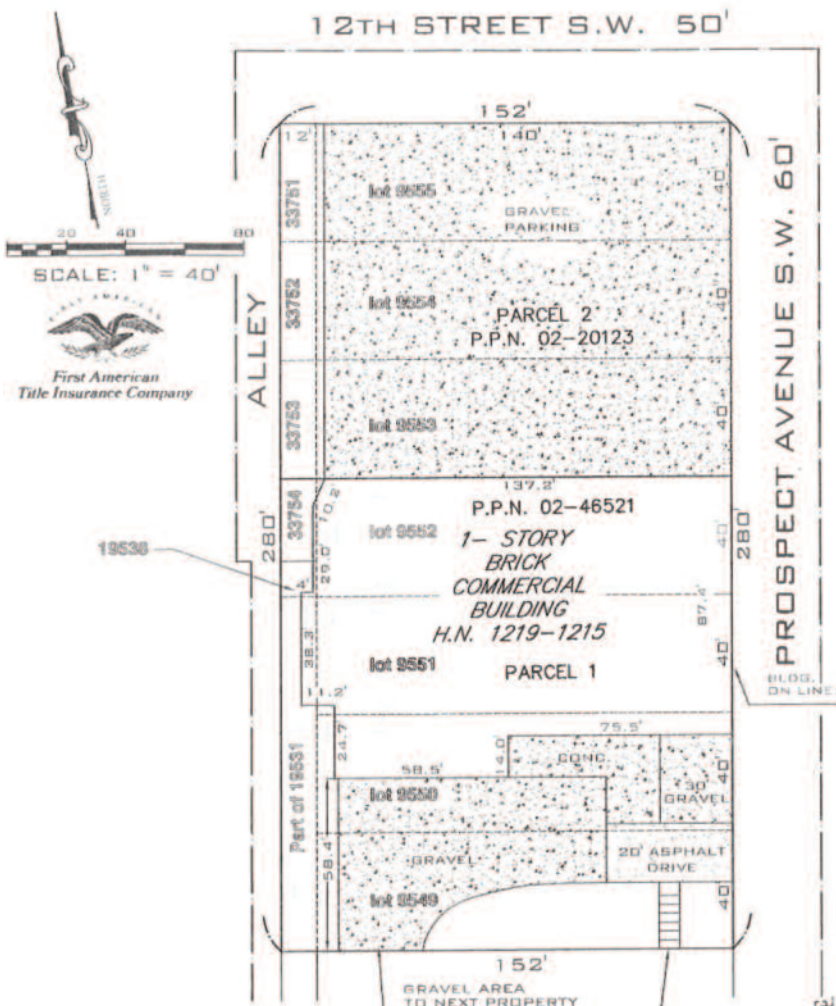
LEADING THE AUCTION INDUSTRY SINCE 1945
Information is believed to be accurate but not guaranteed.



Motorcycle- Trucks- Lift: 1999 Harley Davidson FLHTC Electra Glide Classic with California sidecar- '91 Ford Super Duty Custom 1 ton with 8' dump bed and snow plow, auto, gas, 35,900 actual miles- '91 Chevy Van 30, utility w/ladder racks tool cabinets and shelves, 103,000 miles-older Mitsubishi propane tow motor, model FGC20

Tools-Roofing Equipment: Paslode pneumatic nail guns-portable air compressors-pancake air compressor- approx. 16 ext. ladders, alum. and f.glass, up to 40'-step ladders-wide and narrow 24' alum. scaffold picks-4 hand hoists with A frames-mop tubs and luggers-Garlock roof buggies-380 Garlock hot tar trailer- shingle sheer-metal job boxes- Malco 48" mini brake-misc. Shingles-rolls roofing paper-misc. flashing-various length hex head screws-walk behind 8 HP roof cutter-wheel barrows-hand carts-barrel dolly-Lincoln 200 amp 40 v port. welder- 2 floor model drill presses-Milwaukee Sawzalls-Milwaukee port. hand held band saw-Buffalo metal band saw-Generac 5000 watt generator-Homelite chain saw- walk behind snow blowers-MTD walk behind 5 HP multi vac-sm. trash pump-file cabinets-misc. office furniture-Merits power chair-craftmatic bed-shovels and garden tools-chain binders-misc. doors-truck tires-bicycles-Ten Tacles slot machine-shelving and lockers

TERMS ON CHATTELS: Cash, Check, Debit Card, Visa or MasterCard with proper ID auction day. 4% buyer's premium on all sales with 4% waived for cash. Information is believed to be accurate but not guaranteed



Page 1 of 1
 RLS #: R-00-10-1532
 CLIENT #: A26-443
 FIELD DATE: 12-18-2006
 DRAFTER: MN
 APPROVED BY: EBD
 SCALE: 1" = 40'



AUCTIONEER/REALTOR:

Russell T. (Rusty) Kiko, Jr., C.A.I., ext 115, 330-495-0923

REALTOR: Melanie K. Royer, 330-831-1446

AUCTION BY ORDER OF: Lorraine Cirone

