



# AUCTION

Russ Kiko Associates Inc. Auctioneers • Richard T. Kiko Agency, Inc. Realtor  
2722 Fulton Drive. NW, Canton, OH. 44718 • (330) 455-9357

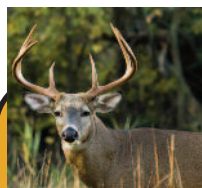


[www.kikoauctions.com](http://www.kikoauctions.com)



**SATURDAY - OCTOBER 24, 2015 - 10:30 AM**

**REAL ESTATE SELLS AT 11:00 AM**



## *Kreierhoff Auction*

**75 Acre Farm with Home - Bank Barn & Outbuildings - Augusta Twp – Carroll Co. – Minerva LSD - Open/Wooded Land with Young Timber – Sugar Woods**

**Gas & Oil Mineral Rights Sold Separate with 2011 Chesapeake Lease**



**Also Selling: Tractors – Equipment – Tools – Approx. 60 Rd Bales**

Absolute auction, family moving out of state, all sells to the highest bidder on location:

**2059 BRUSH RD. EAST ROCHESTER, OHIO 44625.**

**Directions:** From Minerva take Arbor Rd. to Brush Rd and continue on Brush to Farm – OR – From Rt 9 north of Augusta take Brush Rd west to Auction. Watch for **KIKO** signs...



**Real Estate: Parcel #1** – 74.681 acres of land, approx. 50% tillable/pasture ground and 50% wooded. Brick/vinyl home with updated metal roof offering country kitchen w/ dining area – dining room w/ hardwood floors, w/ full bath, step up living room, 1/2 bath off living room, main level offers 2-3 bedrooms, in-law suite/efficiency apartment above the attached 2 car garage w/ kitchen, living room, bedroom and full bath. Full divided basement w/ oil furnace and breaker electric. Walk up storm doors – loads of sand stone landscape w/ 4 landscaped fish ponds – 8 X 12 starter green house, 8 X 12 storage shed, used for making maple syrup. Good Quonset roof bank barn w/ water and elec. 24 X 32 metal equip shed. Nice rolling land w/ beautiful panoramic views – Approx 50% wooded w/ young timber and good variety of cherry, oak and maple. Loads of wildlife, deer, turkey, etc – gas and oil mineral rights sold separate. Convenient location w/ loads of opportunity.



**Parcel #2** – 74.681 acres of gas and oil mineral rights w/ 2011 Chesapeake lease up for renewal in May of 2016.



**TERMS ON REAL ESTATE:** 10% down auction day, balance due at closing. Buyer's premium of 10% to be added to the final bid to establish the purchase price. Any desired inspections must be made prior to bidding. All information contained herein was derived from sources believed to be correct. Information is believed to be accurate but not guaranteed.

**LEADING THE AUCTION INDUSTRY SINCE 1945**

Information is believed to be accurate but not guaranteed.



# KIKO Auctioneers



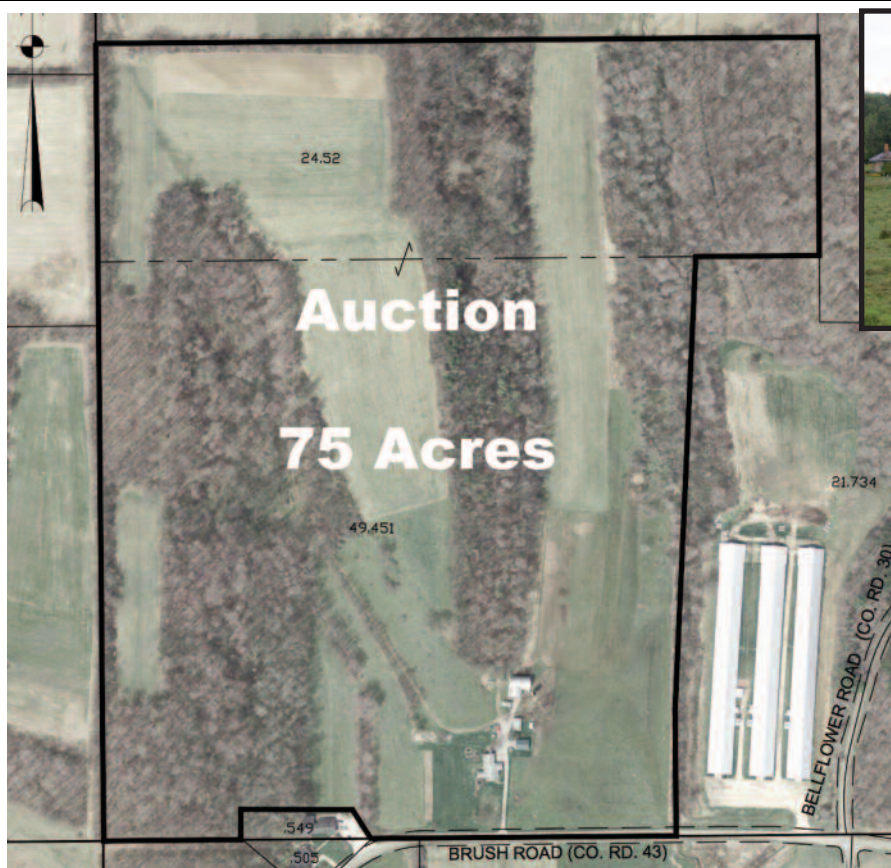
www.kikoauctions.com

2722 Fulton Dr. NW Canton, Ohio 44718

**75 Acre Farm - Open/Wooded Land with  
Young Timber - Sugar Woods  
Gas & Oil Mineral Rights Sold Separate  
Tractors - Equipment - Tools**

**SAT – OCT 24, 2015  
10:30 AM**

**Members - State and National Auctioneers Association**



**Tractors – Auto – Equipment:** 98 Ford Ranger Auto 2WD – 91 Ford F-150 300 6 cyl 4X4 w/ flatbed, Not running – Int 274 diesel tractor – AC B w/ belly mower – AC WD45 parts tractor – Gleaner E combine w/ 10' grain head – Mustang skid loader w/ broken axle material bucket, pallet forks, manure forks – 8' Double cultipacker – Case grain drill – NH 461 haybine – 150 bu gravity box – Cub Cadet 70 w/ mower deck – 110 and 220 vt compressors – (2) chain falls – assort truck parts – assort old hand tools – few farm primitives – welder – welding rod – ladders – lg chains – hand saws – taps/dies – fish tank – canning jars – misc household items

**Hay:** Approx. 60 5X6 2015 round bales rye, orchard grass, clover mix

**TERMS ON CHATTELS:** Driver's license or State ID required to register for bidder number. Cash, Check, Debit Card, Visa, or Master Card accepted. 4% buyer's premium on all sales; 4% waived for cash or check. Information is believed to be accurate but not guaranteed.

**AUCTIONEER/REALTOR:**

Douglas L. Milano, ext 119, 330-205-2196 &  
Randall L. Kiko, ext 158, 330-831-0174

