



AUCTION

LEADING THE INDUSTRY SINCE 1945

Saturday – January 23, 2016 – 2:00pm

42+/- Acres Land – Mostly Wooded

**POND – PALMYRA TWP – PORTAGE CO, OH
ALL MINERAL RIGHTS OWNED SHALL TRANSFER
SELLS AS ENTIRETY**

ABSOLUTE AUCTION, All sells to highest bidder(s) on location:

McClintocksburg Rd. Diamond, OH 44412

Directions: Take I-76 east of Akron or west of Youngstown to SR 225 exit. Go south on 225 to Williams Rd, and go east to McClintocksburg Rd and south to auction. Watch for Kiko signs.



Information is believed to be accurate but not guaranteed.



330.455.9357 • kikoauctions.com





KIKO AUCTIONEERS

2722 Fulton Dr. NW, Canton, OH 44718

kikoauctions.com

Saturday – January 23, 2016 – 2:00pm

42+/- ACRES LAND – MOSTLY WOODED

Pond – Palmyra Twp – Portage Co, OH
All Mineral Rights Owned Shall Transfer
Sells As Entirety

**MCCLINTOCKSBURG RD.
DIAMOND, OH 44412**



Members – State and National Auctioneers Association

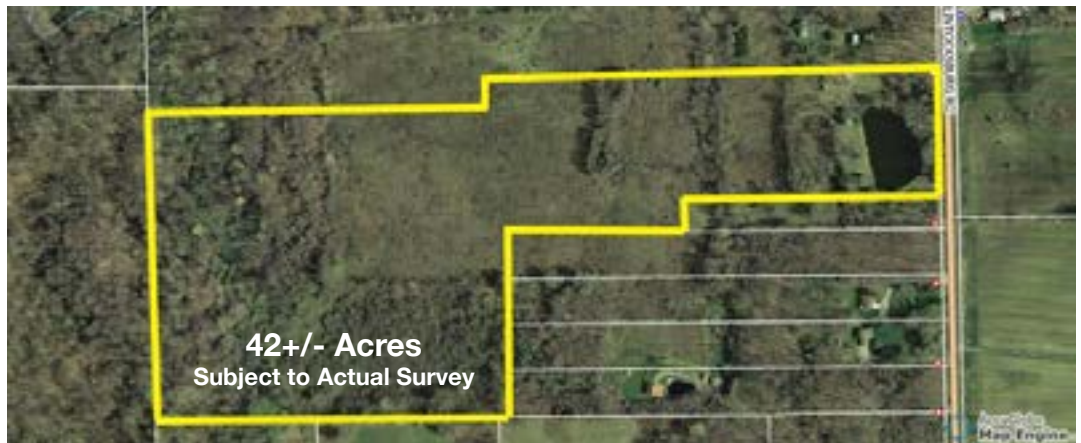


Approx 42 acres total, to be sold in entirety, by the acre. Approx 400' frontage on McClintocksburg Rd. Nice pond to front of property w/ small shed. Mostly wooded land. Creak to rear of property. All mineral rights owned by seller shall transfer subject to own leases of record. Southeast local schools. Walk land at your convenience. Arial map on Kiko website.

TERMS ON REAL ESTATE:

10% down auction day, balance due at closing. There will be a 10% buyer premium added to the final bid to determine the purchase price. Any desired inspections must be made prior to bidding. All information contained herein was derived from sources believed to be correct. Information is believed to be accurate but not guaranteed.

Auctioneer/Realtor: Matthew P. Kiko, AARE, 330-327-9617, mattkiko@kikocompany.com



330.455.9357 • kikoauctions.com

