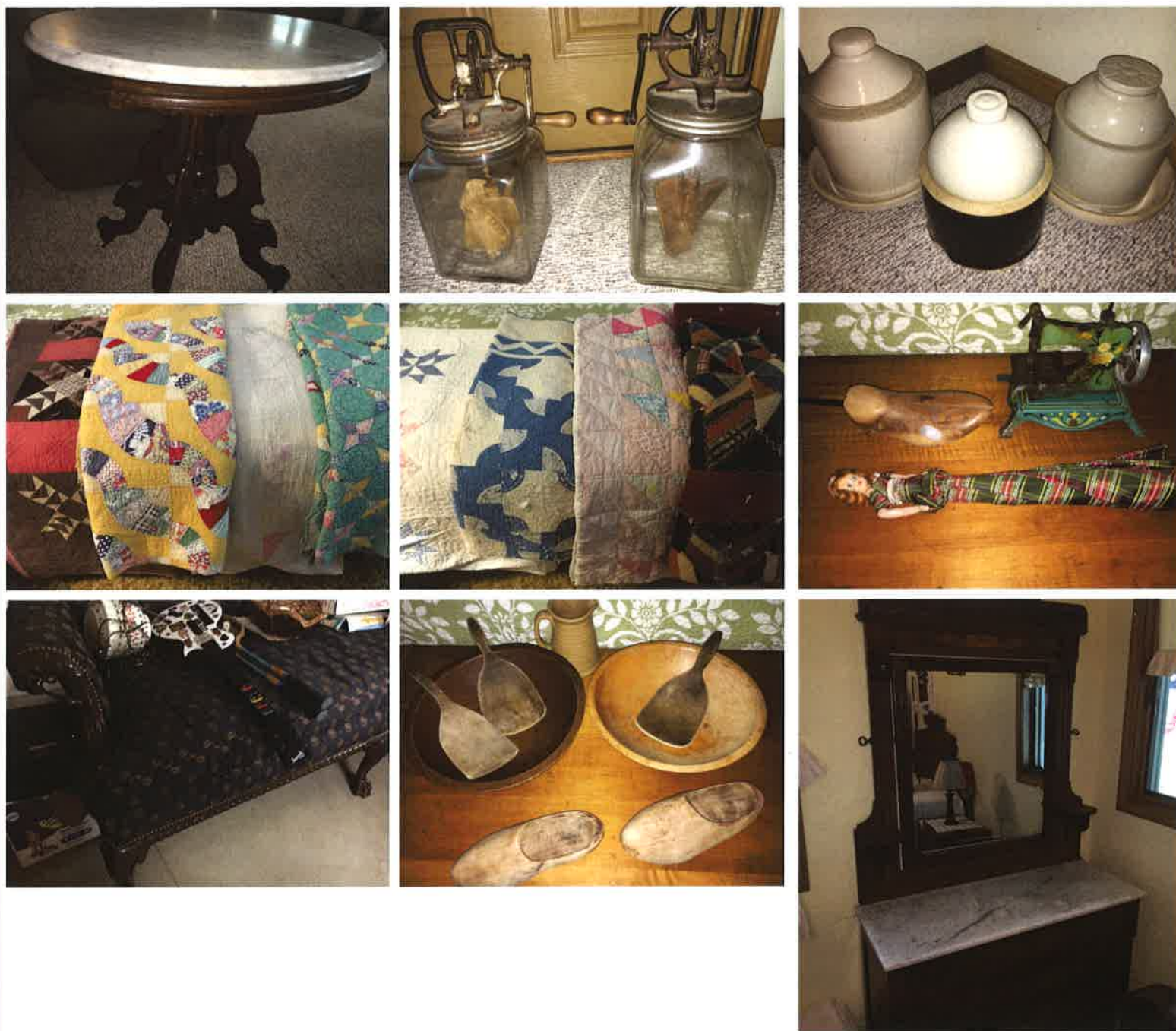


Lawn Tractor - Tools: John Deere 210 garden tractor - lawn roller - utility trailer - aerator - chain falls - 6" jointer - Rockwell 46-140 lathe - steel Craftsman table saw - Delta bench top drill press - air comp - elec. motors - small bench grinder - old band saw - antique 4" vise - hand saws - weed eater - wood lathe tools - picks - adz -splitting wedges - clamps - hand post digger - hammers - wood storage chest - axes - hand tools - Nice auction - Bring your chair and join us!

TERMS ON CHATELS: Driver's license or State ID required to register for bidder number. Cash, Check, Debit Card, Visa, or Master Card accepted. 4% buyer's premium on all sales; 4% waived for cash or check. Information is believed to be accurate but not guaranteed.

Auctioneer/Realtor: Russell T. (Rusty) Kiko, Jr., C.A.I., ext 115, 330-495-0923
Apprentice Auctioneer: Ryan M. Kiko, 330-831-8565

Auction By Order Of: Earl & Robin Althouse



AUCTION

LEADING THE INDUSTRY SINCE 1945

Tuesday - August 9, 2016 - 3:00 PM
Real Estate Sells at 5:00 PM

Earl & Robin Althouse

Auction #1 - 1995 Sq. Ft. Quality Ranch Home with Two-Car Garage Plus Detached Workshop/Apartment

**Auction #2 - Corner Building Lot with Sewer - Great View
 Holmeswood Allotment - Winona, OH - United Local Schools
 Antiques - 50+ Crocks - Furniture - Tools - Quilts**

Retired and downsizing, **ABSOLUTE AUCTION**, All sells to highest bidders on location:

4785 Holmeswood Dr., Winona, OH 44493

Directions: Take SR 9 south of Salem approx. 4 miles to Winona Rd. and left to Holmeswood Dr. Watch for KIKO signs.



Auction #2



330.455.9357 • kikoauctions.com



330.455.9357 • kikoauctions.com



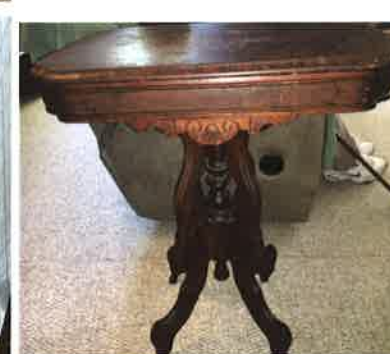
Auction #1 - 1+ acre, part wooded lot with large oak trees, flowers, etc. Quality home, nice private dead end street overlooking Winona. Built 1976. Brick front, foyer entrance, large family and living room with brick fireplace, quality oak kitchen and dining area with built-in china, large mudroom and main floor laundry with loads of cabinetry and half bath. Two master bedroom suites on main level, both with full baths, and private entrance to sunroom and rear deck. 13-course block lower level finished with 3 bedrooms, raised panel doors, large rec room. FA gas heat and central air. Attached two-car garage. Detached 30' X 40' building with one-bedroom apartment plus garage/shop, very nice, with 10' X 30' open porch. Very nice location. Private setting. Shown by appointment. Photos on our website.

Auction #2 - Adjoining .91-acre corner lot with sewer, lays exceptionally nice with great view.

TERMS ON REAL ESTATE: 10% down auction day, balance due at closing. Buyer's premium of 10% to be added to the final bid to establish the purchase price. Any desired inspections must be made prior to bidding. All information contained herein was derived from sources believed to be correct. Information is believed to be accurate but not guaranteed.



Crocks - Antiques - Quilts - Household: Approx. 50+ crocks and jugs (12 gal, 10 gal, 8 gal, stomp crocks, jugs) - blue and white granite buckets w/ lids - large granite pots - black and white granite - granite ladles - copper boiler - pattern glass - covered compote - wooden spoke wheels - antique hand feed cart - Cold Run Rock Farm E.G. Price milk bottle caps - coffee mill - butter churns, Daisy no.60 & Daisy no.40 - pottery chicken waterers - dozen oil lamps - dozen quilts (2 from flax scutching) - dozen cloth feed sacks - wood butter bowls - wood shoes - metal child's sewing machine - child's umbrella w/ doll top - double antique school desk - records - globe - drying rack - small barrel churn - slaw board - early bucket style churn - old barn lanterns - croquet set - old telephone - early saw box - double cherry pitter - block plane - antique food choppers - silver plate - portable singer - wood cradle - jars - squeeze - collector tins - milk cans - half dozen 2 prong pitch forks - other old forks - ss cooler - countertop balance scale - old GE refrigerator - ice pole - galv tubs - ss milk bucket - hanging scale - hay harpoon - several milk cans - washboards - galv. syrup buckets - bellows - corn jabbers - onion planter - misc. baskets - wooden crates



Furniture: Oak wash stand w/ towel rack - Victorian oak high chair w/ cane seat and tray - modern Formica top table w/ 3 chairs and corner bench - lady's collapsible drop front desk w/ pigeon holes - Victorian lamp table w/ dark marble top - oval white marble top Victorian lamp table - flat wall mission oak bookshelf w/ glass front - Whitney mahogany spinet piano - Victorian dresser w/ white marble top, candle stand, and mirror - oak Victorian wash stand - claw foot sofa w/ carved eagle head arms - tapestry covered love seat - oak footed fern stand - walnut night stand w/ stretcher base - Dep. Era dresser w/ mirror - cane seat chairs - Victorian walnut double bed - 1-drawer nightstand w/ splash back - 4-drawer Dep. Era dresser - 10-door oak storage cupboard - flat top oak school desk - padded gentlemen rocker - Victorian candle stand - 6' child's school table w/ chairs - mahogany phone bench - 40 stack chairs and 6 wood folding tables - child's stack school chairs - cherry night stand - daybed w/ mattress - picnic table