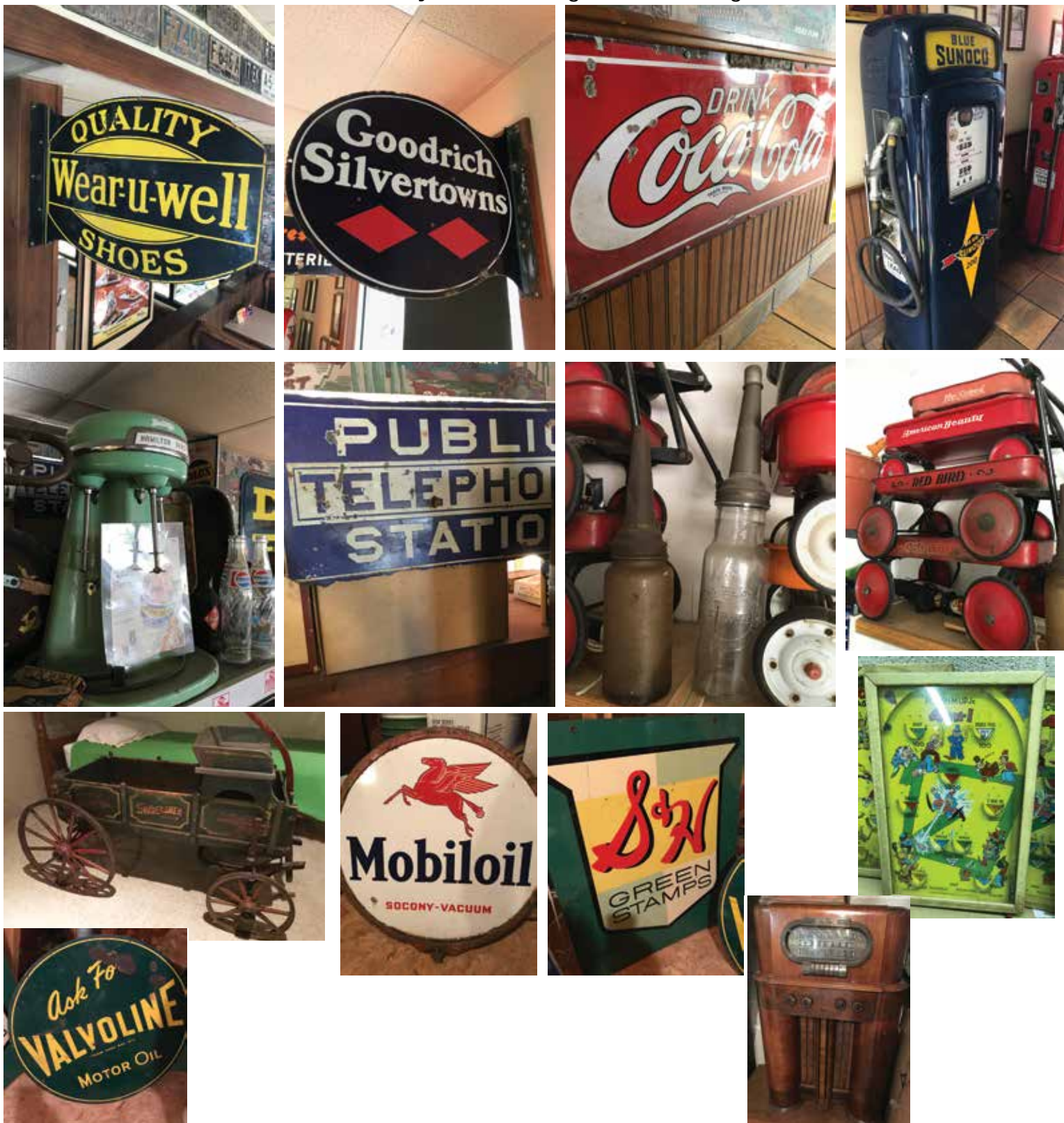


TERMS ON CHATELS: Driver's license or State ID required to register for bidder number. Cash, Check, Debit Card, Visa, or Master Card accepted. 4% buyer's premium on all sales; 4% waived for cash or check. Information is believed to be accurate but not guaranteed.

Auctioneer/Realtor:
Randall L. Kiko, ext 158, 330-831-0174

Auction By Order Of: Roger & Connie Angel



Explore Your Options

AUCTION

LEADING THE INDUSTRY SINCE 1945

Tuesday – October 24, 2017 – 10:30 AM

Lifetime Private Collection

Antiques – Whizzer Bike – Gas Pumps – Porcelain Signs – Pedal Tractor & Cars – Early Advertising Items – Collectibles – Toys

ABSOLUTE AUCTION, owner retiring, all sells to highest bidders on location:
FOR CONVENIENCE, THE AUCTION TO BE HELD AT SUGAR BUSH GOLF CLUB:

11186 SR 88, Garrettsville, OH 44231

Directions: Take SR 88 south of Rt. 422 in Parkman, OH or north of Rts. 44 & 303 to address. (SR 88 just north of Rt. 82 in Garrettsville). Watch for KIKO signs.



330.455.9357 • kikoauctions.com



330.455.9357 • kikoauctions.com



Gas Pumps – Signs – License Plates – Advertising Items: Early Bowser gas pump with brass tag – Fry 5 gal. visible gas pump w/ globe & price sign – Bennett Texaco mod. 1066 gas pump w/ globe – Martin & Schwartz Blue Sunco gas pump – three other early gas pumps – Signs Include: Quality Wear-U-Well Shoes – Delco Batteries – Rt. 43 – Standard Oil Dealer – G-men Garrettsville High – Goodrich Silvertowns – Firestone Batteries – Soud Your Z Pennzoil – Polarine Motor Oils – Toledo Scales – Public Telephone – Atlantic – Texaco – Sinclair – Standard Red Crown – large Coca-Cola – NEHL – Pepsi – Dad’s Root beer – York Ice Cream – Mobil Oil – No Parking with stand – Gulf – Oldsmobile – Pontiac – Buick – Drink Sambo – S & H green stamps – Valvoline – Panama Jack – Hires Root beer – Canfield Gasoline Wm. Penn Motor Oils – large Atlantic – several signs are porcelain – license plates, every year starting 1912 through 1971 – several oil cans & adv. Items including; Sinclair – EN-AR-CO motor oil – Quaker State glass oil jar – Sunco glass jar and others - Polaring can – Ford Antifreeze – DA speed sport – Whiz oil can – glass oil jars – Ford and Chevy hub caps – Adv. Thermometers, (2) by Royal Crown Cola – Dr. Pepper – Prestone – Packard – Monroe – Mail Pouch – The Harvard galv. can – early street light – Dairy Queen neon clock – 2 sets of drive-in speakers – parking meter – Elvis suitcase – candy boxes by Hershey – OH Henry – chocolate candy Tootsie Rolls – Sohio oil can – Rigby’s 5¢ tin – Edgemont cracker tin – Dunlap tire repair outfit – J.G. Dills Plug tins & others

Studabaker Junior Buckboard – Pedal Tractros & Cars – Kids Wood & Metal Adv. Wagons: Early Studebaker Junior buckboard wagon – JD 130 pedal tractor with JD wagon – High-speed child’s wheelbarrow – Castelli pedal tractor – State Farm annv. Tow truck pedal car – Fire Dept. Chief pedal car – tow truck pedal car – wood adv. kid’s wagons by Cruiser – Paris Junior – HC White – Kiddie Kart – Auto wheel coaster – early solid oak with wood spoke wagon – early wood push-me/pull-me car – metal kid’s wagons by High-speed – American Beauty – Red Bird – Son-NU – AMF SX – (2) Greyhounds – early wood runner sleds – Folk Art wood Ford 8N tractor – brass fire extinguisher – baby stoller

Whizzer Bike – Scooter – Child’s Bike – Toys – Antiques – Die Cast: Roadmaster Whizzer bike retro fit with Whizzer motor – several Poosh-m-up games – cast-iron single wheel #2 coffee mill – Arcade coffee mill – glass water cooler – child’s Mobo Minabike – wood hobby horse rocker – Tonka toy car hauler – Buddy “L” steam shovel – Western Flyer toy train – Marx toy ride fire truck – early metal road roller – nylint truck – North American Van Lines truck – Buddy “L” sand and gravel truck – Wyandot fuel truck – cast-iron double decker bus – Royal Crown, Pepsi, & Coke pop carriers – crosscut saw – Mobil oil semi – Hamilton Beach triple head milk shake mixer – Coca-Cola & Dairy Queen tray – slide trombone & clarinet – early Pepsi 16 oz. glass bottle – Dad’s root beer adv. wood box – Partner basketball hoop & post – early metal medical cabinet – oak wall phone – slaw board – Fuller water bag – apple peeler – cast-iron skillet – granite pail – (2) 5 head ss multi-mixer milkshake makers – Anchor Brand wringer – floor-model antique scale – Monogram & AMT & MPC 1/24 plastic model kit cars in original boxes w/ plastic never opened, cars and trucks – AMT R model Mack trucks – Ertel Peterbilt – etc – several die cast banks by Ertel, Coca-Cola, JD, Texaco, Ashland, Vintage Vehicles – limited addition 1:3 pedal cars die cast - standard floor-model tube-type radio & Sivlertone radio and other misc.

Note: Mr. & Mrs. Angel have owned and operated the Dairy Queen in Garrettsville for several years. Many but not all items have been displayed for years in the Garrettsville Dairy Queen. Join us on the 24th.

