



AUCTION

LEADING THE INDUSTRY SINCE 1945

Thursday – February 15, 2018 – 5:30 PM

26.88-Acres Vacant Land

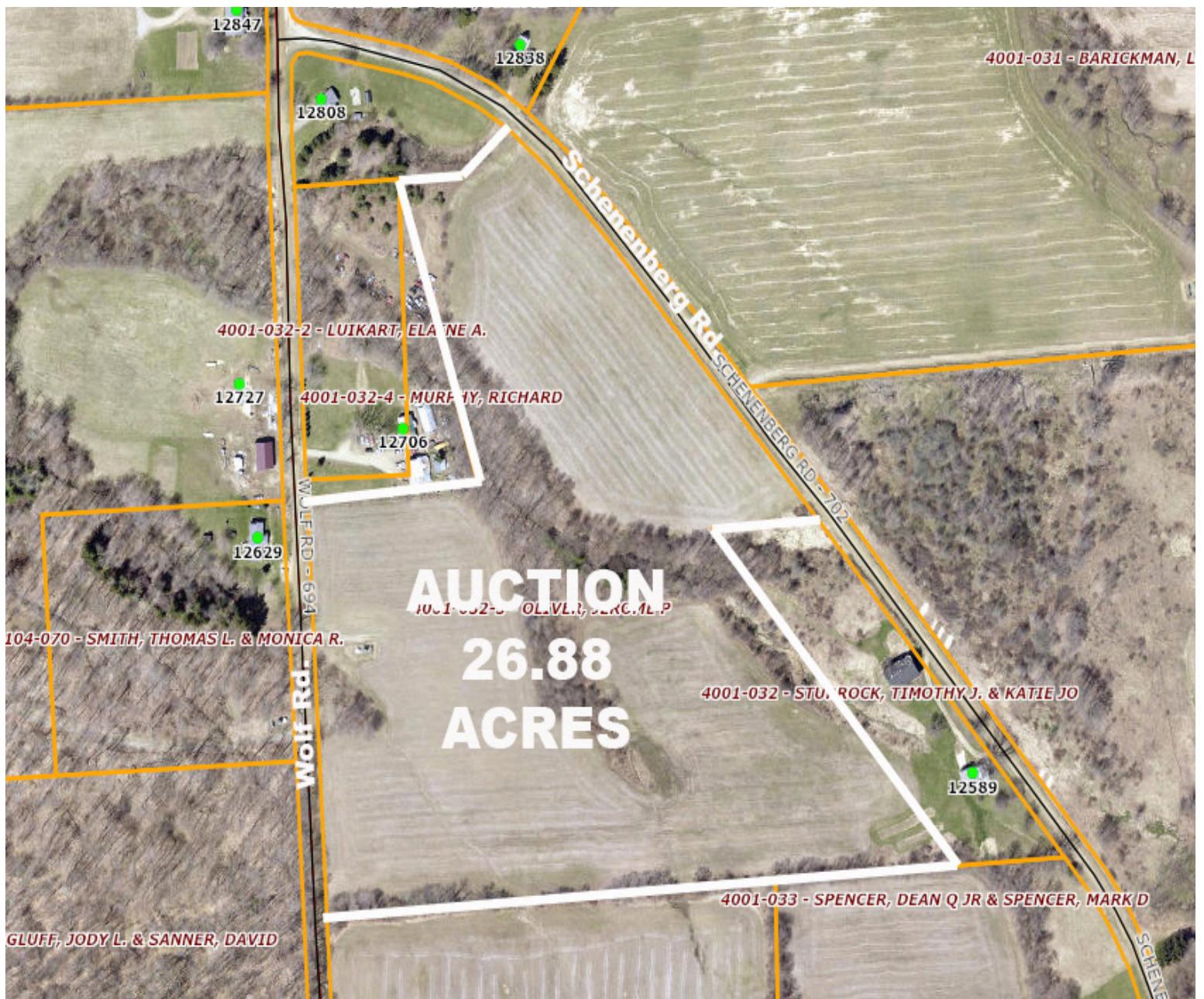
2/3 TILLABLE – POSSIBLE FREE GAS CORNER LOT

Lays Nice – Frontage On Two Roads – Surface Only –
Randolph Twp. – Crawford Co.

ABSOLUTE AUCTION, All sells to highest bidders on location:

Schenenberg Rd. & Wolf Rd., Guy Mills, PA 16327

Directions: Take Rt. 77 east of Meadville, PA to Rt. 198 and south to Guy Mills & west on Plank Rd. to Wolf Rd. and north on Rt. 198 north of Rt. 27 to Guy Mills. Watch for KIKO signs.



Information is believed to be accurate but not guaranteed.



330.455.9357 • kikoauctions.com





KIKO AUCTIONEERS

2722 Fulton Dr. NW, Canton, OH 44718
kikoauctions.com

Thursday – February 15, 2018 – 5:30 PM

26.88-ACRES VACANT LAND

2/3 Tillable – Possible Free Gas – Lays Nice –
Frontage On Two Roads – Surface Only – Ran-
dolph Twp. – Crawford Co.



Members – State and National Auctioneers Association



Auction held onsite – Maps at site or visit us on the web.

TERMS ON REAL ESTATE: 10% down auction day, balance due at closing. A 10% buyer's premium will be added to the highest bid to establish the purchase price, which goes to the seller. Any desired inspections must be made prior to bidding. All information contained herein was derived from sources believed to be correct. Information is believed to be accurate but not guaranteed.

Auctioneer/Realtor:

Russell T. (Rusty) Kiko, Jr., C.A.I., ext 115, 330-495-0923, #AU-002727L
& RS-222810-L. Russ Kiko Assoc. #AY000170L.

Auction By Order Of:

Jerome Oliver



Auctioneer/Realtor®
RUSSELL T. (RUSTY) KIKO, JR.
330.495.0923
rustykiko@kikocompany.com



330.455.9357 • kikoauctions.com

