



AUCTION

LEADING THE INDUSTRY SINCE 1945

FRIDAY - NOVEMBER 29, 2019 - 12:00 NOON SHARP

Grable Trust

20+/- ACRES OF LEVEL-LAYING LAND, MOSTLY TILLABLE

Double Road Frontage

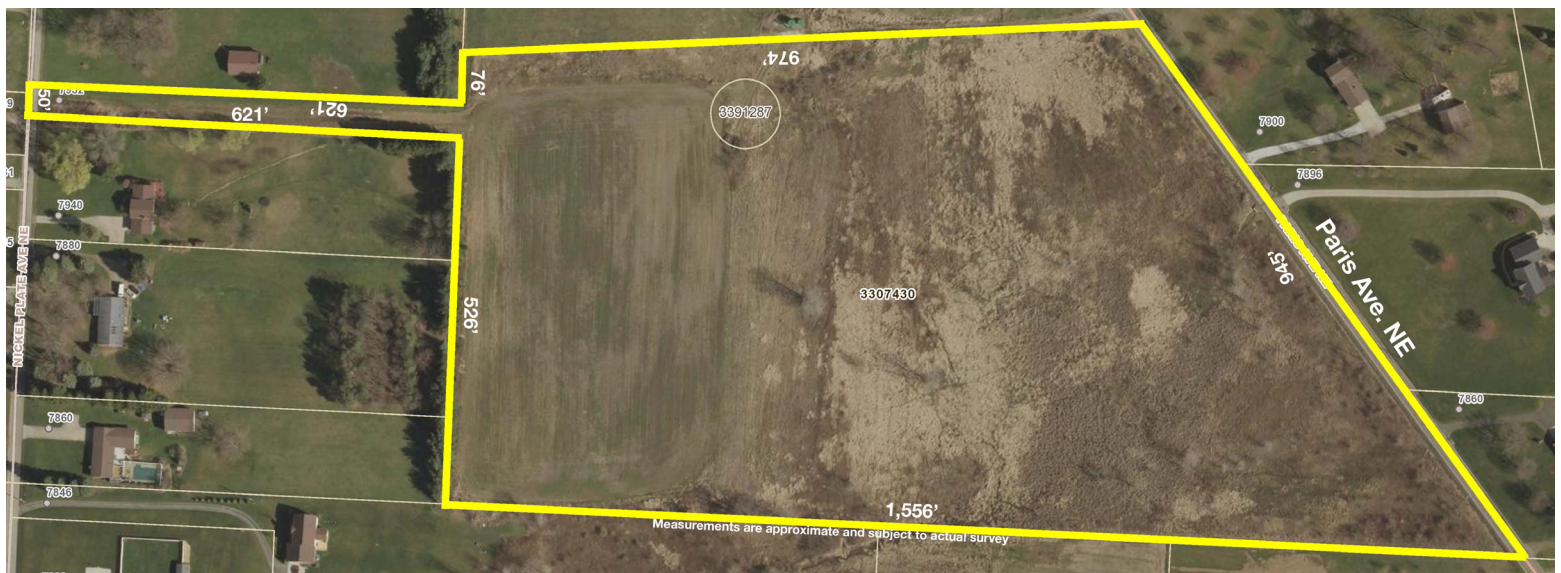
Louisville Schools - Nimishillen Township - Stark County

Absolute auction, all sells to the highest bidder on location:

PARIS AVE. NE, LOUISVILLE, OH 44641

Directions: From RT 62 and Paris Ave. take Paris Ave. north to property. Property between SR 62 and Columbus Rd.

Watch for KIKO signs.



Real estate offers approximately 20 acres of nice level-laying land with 945' of frontage on Paris Ave. and 50' of frontage on Nickel Plate Ave. A portion of this property has been used for crop land. Property is conveniently located just minutes from SR 62 and minutes from shopping and entertainment. All mineral rights reserved by seller. Taxes per year are \$435.62.

TERMS ON REAL ESTATE: 15% down auction day, balance due at closing. A 10% buyer's premium will be added to the highest bid to establish the purchase price, which goes to the seller. Any desired inspections must be made prior to bidding. All information contained herein was derived from sources believed to be correct. Information is believed to be accurate but not guaranteed. Property to be sold as an entirety and not to be offered in separate parcels.



Auctioneer/Realtor®

RANDY L. COMPTON

330-704-5702

rcompton@kikocompany.com

Information is believed to be accurate but not guaranteed.



330.455.9357 • kikoauctions.com

