



AUCTION

LEADING THE INDUSTRY SINCE 1945

TUESDAY – MAY 28, 2019 – 1:00 PM

Commercial Vacant Land

2.31 AC. W/ WATER, SEWER, & GAS

Zoned I-2 – Enterprise Circle - Stark Co. – Louisville, OH

Absolute auction, all sells to the highest bidder on location:

ENTERPRISE CIRCLE, LOUISVILLE, OH 44641

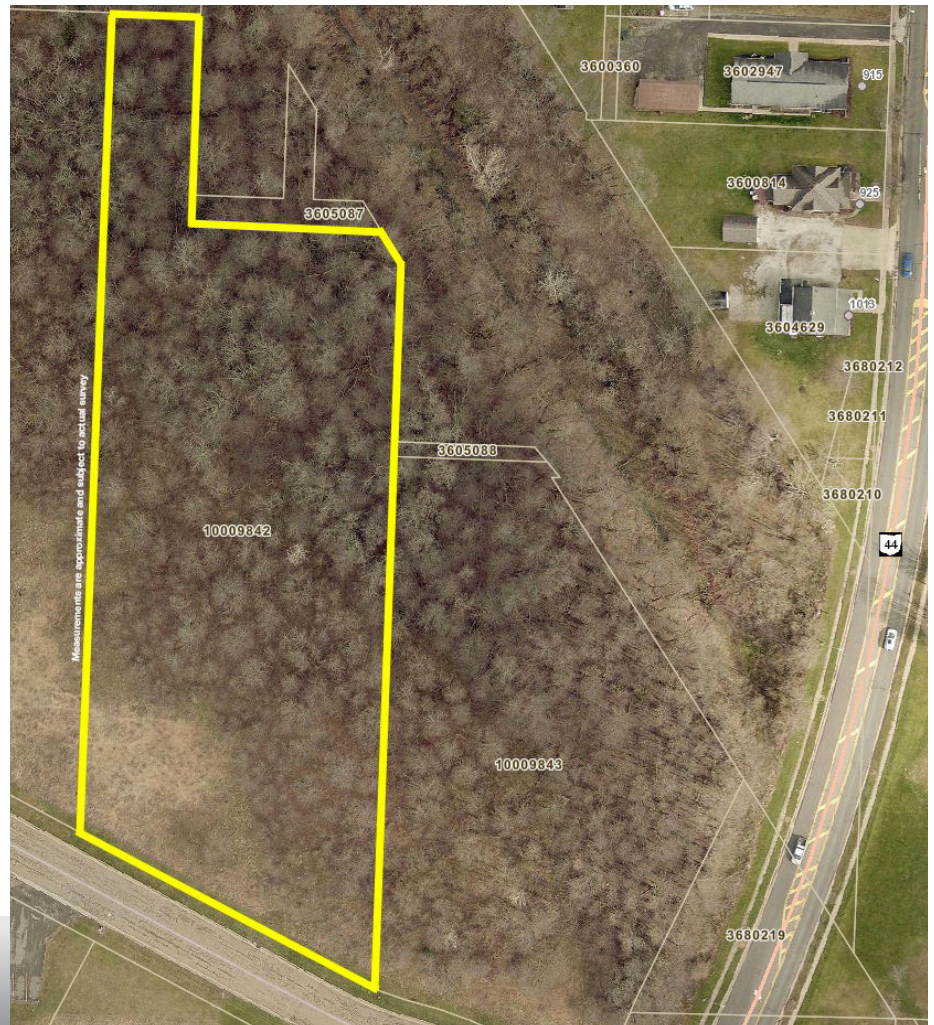
Directions: Take SR 44 south of SR 153 to Enterprise Circle and right to property. Watch for KIKO signs.

Real estate features 2.31 acres level land w/ fully developed commercial zone. All utilities are at the street (gas, water, sewer, & electric). Zoned I-2. Nice frontage & easy access. Taxes are \$393.15 per half year. Walk this land over anytime. Call George for help with financing.

TERMS ON REAL ESTATE: 10% down auction day, balance due at closing. A 10% buyer's premium will be added to the highest bid to establish the purchase price, which goes to the seller. Any desired inspections must be made prior to bidding. All information contained herein was derived from sources believed to be correct. Information is believed to be accurate but not guaranteed. Property to be sold as an Entirety and not to be offered in separate parcels.



Auctioneer/Realtor®
GEORGE P. KIKO
330-418-1095
george@kikocompany.com



Information is believed to be accurate but not guaranteed.



330.455.9357 • kikoauctions.com

