



AUCTION

LEADING THE INDUSTRY SINCE 1945

Realtors • Auctioneers • Advisors

SATURDAY – FEBRUARY 22, 2020 – 9:00 AM

REAL ESTATE SELLS AT 10:00 AM

Followed By Equipment, Feed, Cattle

Smith Valley Dairy Farms

**371-Acre Dairy Farm With Improvements & Vacant Land Tracts
Yellow Creek & Washington Townships – Columbiana Co. – Offered In
Parcels – Farm – Nature – Hunting Tracts – 50% Gas & Oil Transfer**

Also Selling: Case IH & Int. Tractors – Combine – Farm & Dairy Equipment – Grain & Feed
Bins – Corn Silage & High-Moisture Corn – Sudan Grass – Small Square Bales –
220 Quality Holsteins – Farm Items

Absolute auction, owner retiring from a lifetime in dairy. All sells to the highest bidder on
location: **19967 BOLIVAR RD., WELLSVILLE, OH 43968**

Directions: Take Rt. 164 south of Lisbon, OH to SR 39 and east to Bolivar Rd. or Rt. 39 west of Rt. 7 in Wellsville to Bolivar Rd. and
property. Watch for KIKO signs.

Parcel #1



Parcel #2



Quality Tractors – Skid Loader & Attachments: Case IH 7220 MFWD, full cab, 18 sp. P.S. 3 pt, 540/1000 PTO triple remotes, 18-4-42 rubber with T-rail duals, 12 front weights 7,740 hrs, ser #AUB0080575 – Int. 1086 cab, 3 pt., 540/1000 PTO, dual remotes, 20.4 38 good rubber, 5,230 org. hrs., ser #2610183U50679 – one-owner Int. 986 4-post 540/1000 PTO rebuilt 5 yrs. ago, dual remote, 18.4-38 rubber, ser #2510192U1736 – one-owner Int. 686 WF with Buhler 496 loader with mat. bucket and bale spear, 18-4-38 rubber, single remote, 10K hrs. – one-owner Case 70XT skid loader with approx. 3,600 on new engine, with mat. bucket – QT 6’ mod. 1150 Mench hyd. side shooter – like-new QT rubber tire scraper – QT tire scraper – QT mat. bucket – QT homemade free stall leveler – 18-4-38 T-rail duals, good

Truck – Combine – Grain Cart – Gravity Wagons: 1995 Paystar 5000 dump truck with 13 sp. Eaton Fuller trans. N14 Cummings engine, dual tandem with tag axel, 20’ (J & J) alum. bed with tarp, 46K# rears, 715K miles – Case IH 1666 axial-flow hydro combine 4X4 with 3,751 hrs., 30.5L-32 & 16.9-26 rubber, ser #JJ00105020 – Case IH 1063 6 RN corn head – Case IH 1020 17 1/2’ flex head – Pequea 606 header cart – like-new Killbros 357 gravity box with Pequea 1086 gear and Killbros seed auger with brushes – Killbros 350 gravity box with Pequea 1086 gear and Killbros fert. auger – EZ-Trail 510 grain cart 1K PTO with tarp – (2) older gravity boxes with gears – flat-bed wagon

Planting – Tillage Equipment: One-owner Sunflower 9413 15’ no-till drill, 24 hole, 7.5” spacings with grass seeder, press wheels, ser #A6C-594130BZ90017-15 – Case IH 1200 6 RN corn planter, dry fert., rebuilt 2 years ago – one-owner Case IH 3850 18’ flat-fold flex wing cushion shank disc with harrow – Int. 6650 10-shank disc chisel conser-till with new disc – Case IH 415 14’ cultmulcher – like-new Unverfeth zone-builder 4 shank ripper spring reset with depth wheels

Chopper – Forage Equipment – Spreader – Feed Grinder – Rake: Sharp Case IH FHX 300 chopper with processor, ser #HBJ0047626 with mod. HDX3R 3 RN corn head ser #HBJ0004194 and Case IH 8 1/2’ open-end hay head ser #HBJ0043117 sells as unit with spout extension for truck – one-owner Miller Pro 1060 series II blower 540 PTO – Miller Pro 5100 & 5200 tandem gear 16’ forage boxes with roofs – Int. 120 & 110 tandem gear 16’ forage boxes with roofs – Knowles HD tandem mod. T1168M 16-ton gear – sharp NH 355 feed grinder ext. screens & scales, all hyd. – Pequea 20’ dolly-wheel feed wagon – one-owner Knight 8132 tandem side slinger spreader – like-new one owner Kuhn GA 7922 24’ dual rotary rake – 32’ skeleton elevator with ext. sec. (no carriage) – Allied H & G 40’ electric elevator – Int. #10 6’ flail chopper, excellent

Grain & Feed Bins – Augers: Sukup (approx. 7 yrs. old) 30’ X 5 ring 10K bu. bin with 10 HP dryer, stirrator, power sweep, top spreader, drying floor, propane – Brock (7 yr. old) 24’ X 7 ring 7500 bu. bin with floor and fan, top spreader, selling sweep auger separate – (2) self-standing approx. 1,000 bu. bins with 6” unloading auger – Brock 6-ton feed bin with approx. 30’ flex auger – one-owner 10” X 62’ Hutchinson swing auger hyd. lift – Hutchinson 8” X 52’ auger with new gear box

Feed: Approx. 500 ton and 50 ton lot of corn silage in bunk – approx. 45 ton of high-moisture ground shelled corn in a bag – 135 ton of chopped Sudan grass in a bag – 800 total small square bales of 2nd and 3rd cutting hay – 350 small square bales of 1st cutting hay – 450 small square bales of wheat & oats straw

Dairy Equipment: 11 Calf-Tel hutches with wire and rear bedding doors – Patz 5 HP small square bale chopper with blower pipe, new bearings and knives – 5 1/2” X 16’ bale feeder – 2,500-gal Molasses poly tank – several fans 5’ & 4’ box fans and round fans, approx. 20 total – breeding wheel – calf bottles – fresh cow pale – drench pump – calf blankets

Bulk Tank & Milking Equipment: Double 12 parabone SS parlor with air gates & galv. brisket rail with 24 DeLaval units & 24 DeLaval milk meter take-offs – 3” ss lowline with ss receiver group with Boumatic optiflo variable speed new probe auto wash – Surge 2,000-gal dual compressor auto wash bulk tank ser #970427 – Mueller plate cooler – ss wash vats – high-pressure booster pump – Ingersoll Rand 2-stage 5 HP air compressor – 10 HP variable speed vacuum pump – Goosen electric crowd gate – washer & dryer (NOTE: Buyer of the farm Parcel #1 will have the option to take the bulk tank and milking equipment and parlor for a price of \$30,000 to stay with the farm. If they decline, the equipment will be auctioned off the same day)

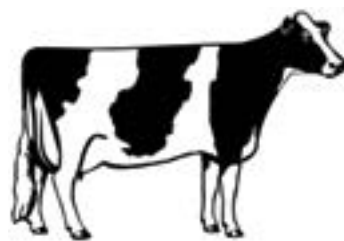
Farm Related Items: (2) 10’ sections of headlocks – Gandy applicator – (2) air tube dryers – foot bath – Mira fountain water single hole – old vacuum pump – heat house for Farmall M & 686 – trash pump – pile of sandstone – stock tank – 10’ feeder – (2) homemade HD steel feeders – (5) milk meters – old surge single 4 parlor with air cyl., controls and doors – barn-door track – 19’ truck tarp – pallet of bin parts and bolts – farm misc. – scrap iron pile – (5) 7’ J-bunks – Goosen 10’x50’ crowd gate – Harvestore drive gear box & used conveyor chain

Holstein Dairy Cattle: 100+ mature cows, various lactations w/ good feet, legs and udders, parlor and free stall trained. Tank average 73 lbs. 4% BF, 3.23 protein, 187K SCC. Most AI sired and bred by ABS & COBA. Some real fancy individuals. 115 Heifers (25) bred 6-9 months, (32) pasture bred 1-5 months, (23) yearlings, (35) from 8 months down to calves. Heifers pasture bred to (2) Herd bulls, 1 red & white. You’ll like these cattle.

Everything has been very well maintained. You’ll like what you see. Gerald, Bernice and Jeff have farmed their entire lives and are retiring from dairy farming. **Open House for equipment and cattle Friday, February 21, 12 Noon – 4:00 PM.**
Sale Order: 9AM misc. farm items – 10 AM real estate followed by farm equipment at approx. 11 AM, then dairy equipment and feed bins, cattle at approx. 12:30 PM. Quality throughout.

TERMS ON CHATTELS: Driver’s license or State ID required to register for bidder number. Cash, Check, Debit Card, Visa, or Master Card accepted. 4% buyer’s premium on all sales; 4% waived for cash or check. Information is believed to be accurate but not guaranteed. Multi Par auction process may be used.

Auction By Order Of: Smith Valley Dairy, Gerald & Bernice Smith



Auctioneer/Realtor®
RANDALL L. KIKO
330-831-0174
randall@kikocompany.com



Auctioneer/Realtor®
RUSSELL T. KIKO JR.
330-495-0923
rustykiko@kikocompany.com

800-533-5456 | kikoauctions.com



800-533-5456 | kikoauctions.com



Sale #1 - 348 acres, all adjoining. Parcels #1 through #8 will be sold by the acre choice, high bidder can take their choice until they are all sold.

Parcel #1 - 156+/- acre dairy farm (19967 Bolivar Rd.) with good two-story farmhouse - bank barn with 30 X 72 7-year-old addition with double 12 parabone parlor and holding area, milk house, free stall barn with 107 stalls and bunk feeder and Patz conveyor - 30 X 130 attached loafing shed and feed room - large concrete feed lot - poured concrete manure pit - (2) 20 X 80 Harvestore silos with unloaders w/ 200 ton of haylage and 300 ton of corn silage to transfer at \$20 per ton - stationary Rissler TMR mixer with scales and belt conveyors - (2) 14-ton feed bins - 52' X 135' divided bunker silo - approx. 8-year-old 62' X 100' heifer barn with Steinway gates and headlocks with curtains - attached 28 X 37 covered manure and sawdust storage - 36 X 72 enclosed equipment shed with 21' X 72' 4-bay lean-to addition - 28' X 44' pole building with 12' X 28' addition - concrete block wagon shed - 36' X 40' 4-bay garage - 3 water wells - manure filtration system for parlor/milk house - approx. 80 acres tillable - 25 acres of pasture mostly high tensile balance wooded with pond. NOTE: Milking parlor and milking equipment can be added to the highest bid for package price of \$30,000, otherwise sold separate.

Parcel #2 - 29.7 acres (20173 Bolivar Rd.) with two-story farmhouse, pole barn garage, plus older bank barn. Nearly all tillable farmland with well and septic.

Parcel #3 - 22.5 acres. Nice contour strips, 98% tillable.

Parcel #4 - 35.2 acres. Approx. 12 acres tillable balance wooded with outstanding views.

Parcel #5 - 13.6 acres with loads of frontage. Mostly open, all tillable or pastureland.

Parcel #6 - 22 acres. All wooded with loads of frontage. Lots of Nature, great hunting parcel. Frontage on Steubenville Pike Rd.

Parcel #7 - 47.3 acres. All tillable. Farmland with contour strips. Frontage on Steubenville Pike Rd.

Parcel #8 - 18.6 acres. 2/3 open land balance wooded. Outstanding views. Frontage on Steubenville Pike Rd.

Sale #2 - 23 acres sold in 3 tracts, choice. Located just north of main farm on Bolivar Road.

Parcel #9 - 3+/- acres with loads of frontage. All open land.

Parcel #10 & #11 - Approx. 10 acres each. 1/2 open and wooded nature tracts. Beautiful building sites.

Note: 50% of gas and oil rights to transfer with each parcel. Currently there are no leases. Some interesting parcels. Walk them over at your convenience. Main farm and homes are shown by appointment only. Additional land available to rent.

TERMS ON REAL ESTATE: 10% down auction day, balance due at closing. A 10% buyer's premium will be added to the highest bid to establish the purchase price, which goes to the seller. Any desired inspections must be made prior to bidding. All information contained herein was derived from sources believed to be correct. Information is believed to be accurate but not guaranteed. Property to be sold as Separate Parcels and not to be offered as an Entirety.

